

950 BROADWALK | SUITE 305 | SAN MARCOS, CA



FOR SALE

For more information, please contact

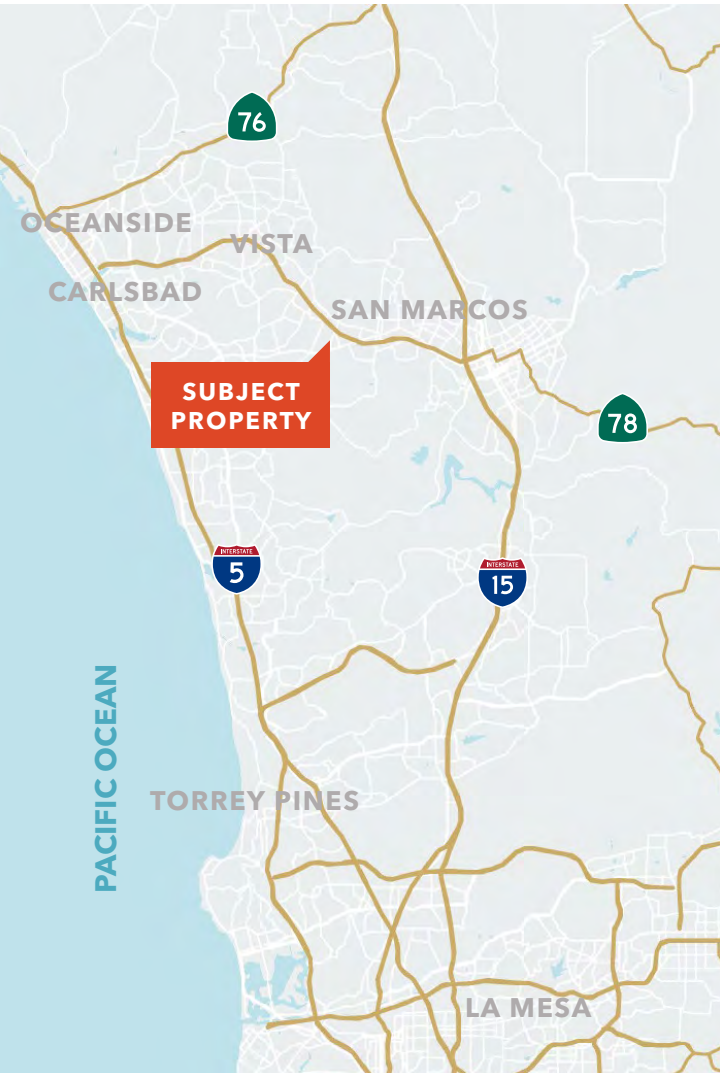
JOHN HOFFMANN
760.402.8950
john.hoffmann@kidder.com
LIC N° 01023816

KIDDER.COM



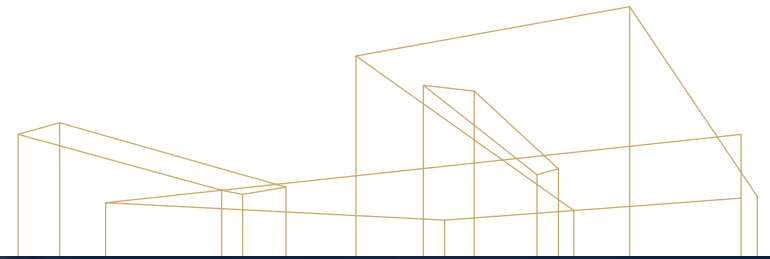
PARK PLACE NORTH

950 BOARDWALK | SUITE 305 | SAN MARCOS, CA



PARK PLACE NORTH

950 BOARDWALK | SUITE 305 | SAN MARCOS, CA



Located in downtown San Marcos, Park Place North features condos with walk-out balconies, scenic views & spacious common office areas.



2,909 RSF THIRD FLOOR OFFICE CONDO AVAILABLE



8 WINDOW-LINED OFFICES & LARGE CONFERENCE ROOM



FWY 78 ACCESS VIA SAN MARCOS BLVD OR LAS POSAS



WALKING DISTANCE TO EXCEPTIONAL RESTAURANTS



EXTERIOR INCLUDES WELL-LANDSCAPED GROUNDS



AMPLE PARKING RATIO



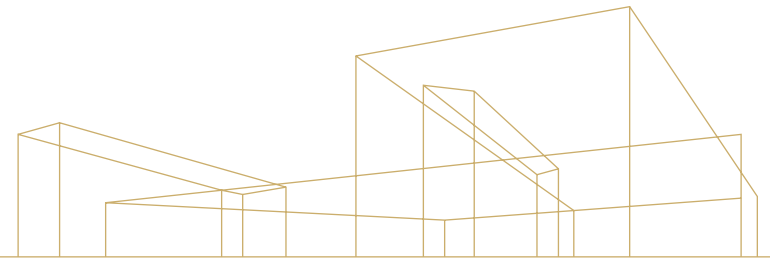
BUILDING IS ELEVATOR-SERVED



38,514 RSF THREE-STORY OFFICE BUILDING

PARK PLACE NORTH

950 BOARDWALK | SUITE 305 | SAN MARCOS, CA



Suite 305

2,909

RENTABLE SQUARE FEET

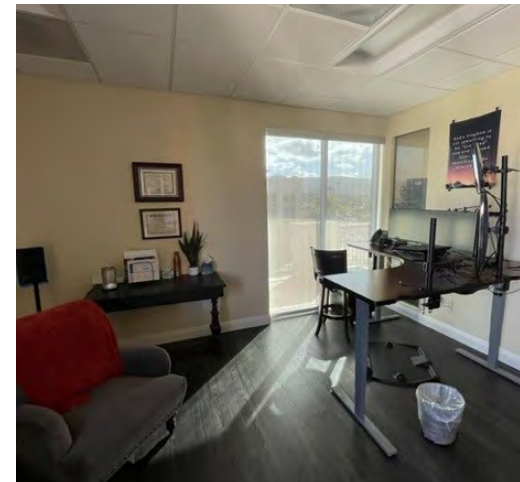
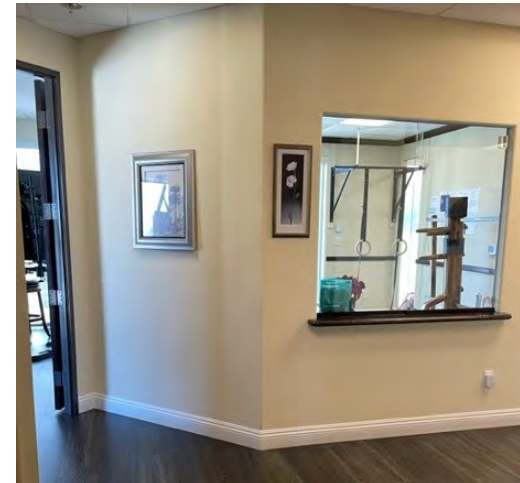
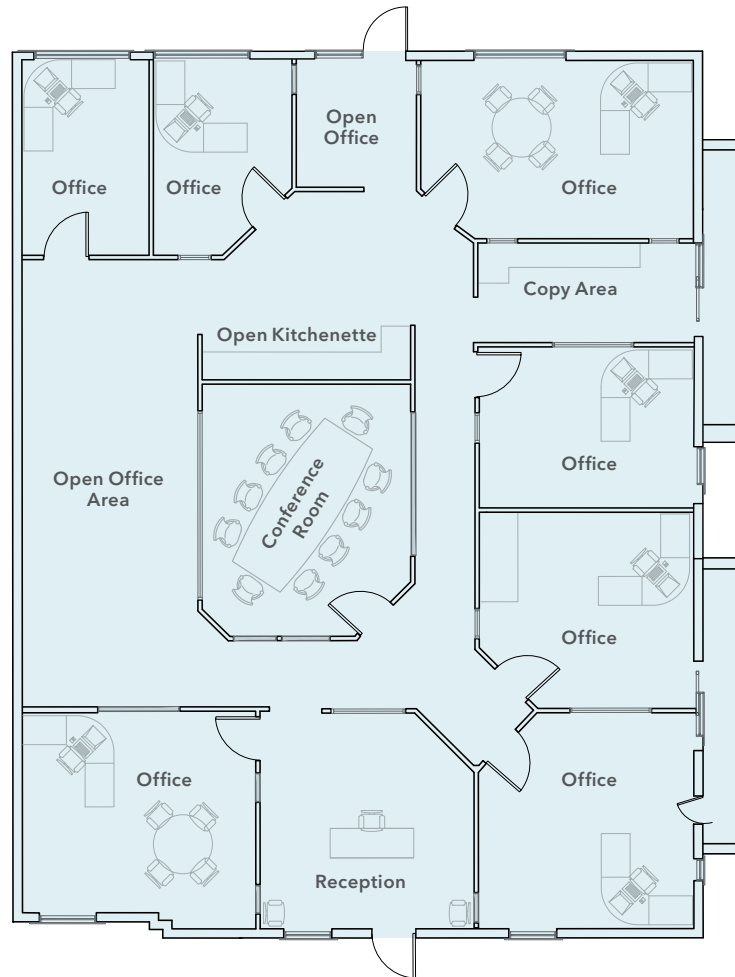
\$858,000

SALE PRICE

2006

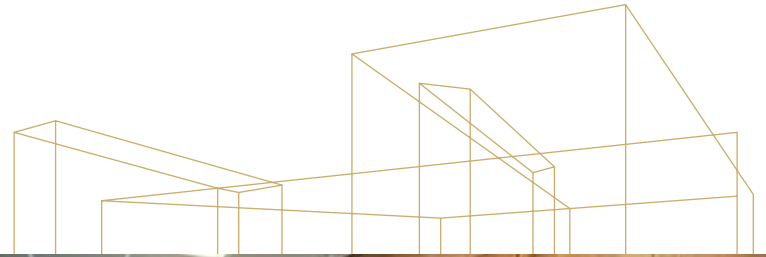
YEAR BUILT

This spacious office condo features 8 window-lined offices, a centered conference room, an open office area, an open kitchenette, a reception area & exclusive balcony access with scenic views and 3-sides of glass-lined natural light



PARK PLACE NORTH

950 BOARDWALK | SUITE 305 | SAN MARCOS, CA





PARK PLACE NORTH

For more information, please contact

JOHN HOFFMANN

760.402.8950

john.hoffmann@kidder.com

LIC N° 01023816

KIDDER.COM

This information supplied herein is from sources we deem reliable. It is provided without any representation, warranty, or guarantee, expressed or implied as to its accuracy. Prospective Buyer or Tenant should conduct an independent investigation and verification of all matters deemed to be material, including, but not limited to, statements of income and expenses. Consult your attorney, accountant, or other professional advisor.

